

MONUMENT RECORD
State of Indiana - County of Monroe

Section: 17

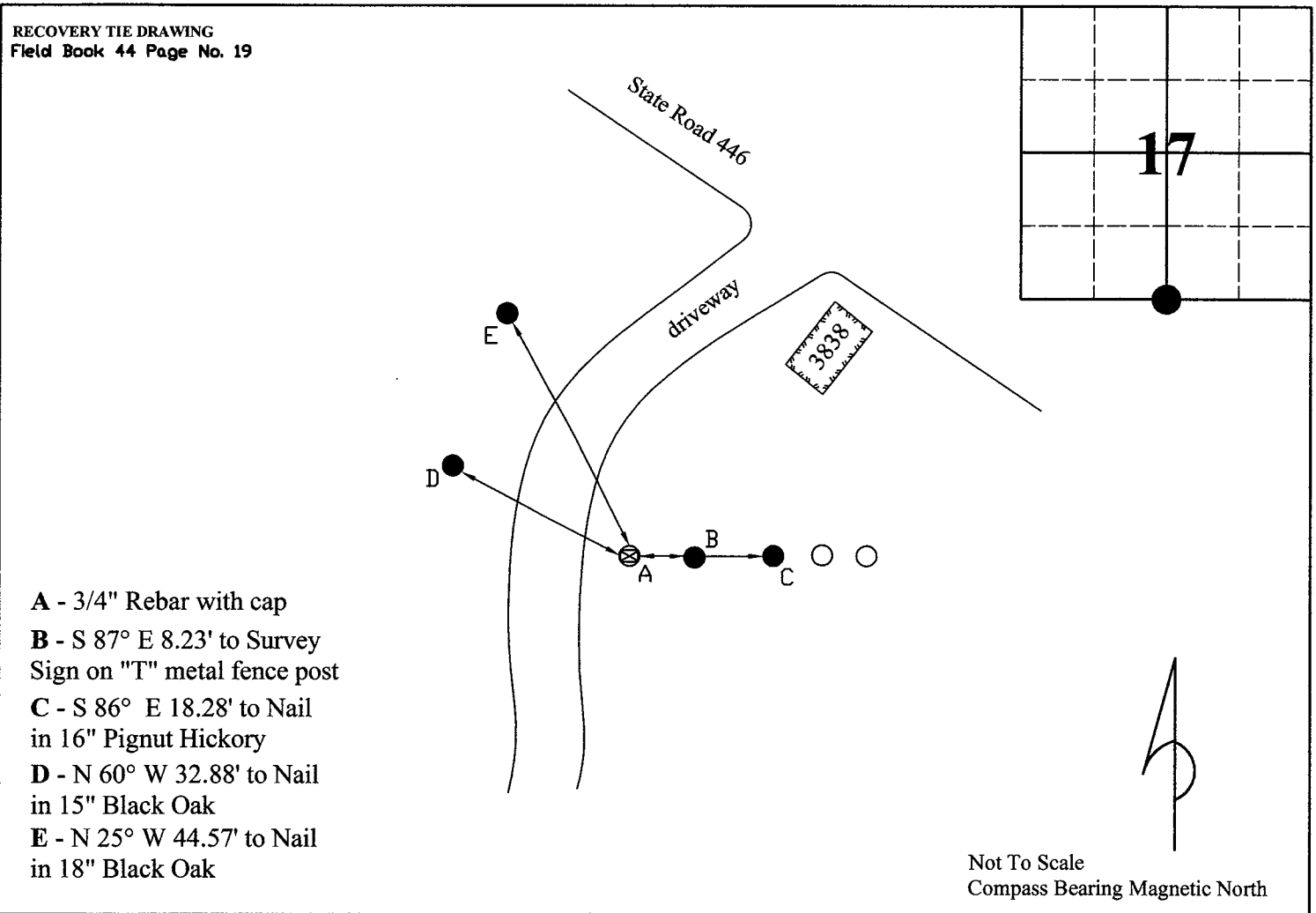
Township: 8 North

Range: 1 East

Corner ID: SaCr G-13

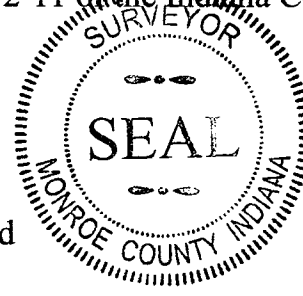
Monument Description & Remarks: 3/4" Rebar bent, County Surveyor straightened Rebar and Set aluminum cap, "MONROE COUNTY SURVEYOR". Survey Sign 4ft above ground at pt. B

References On File: Darren R. Norrington survey, Judd Brewer Boundary Survey (2010), on file in Recorder Office cabinet S2, envelope 31



I, Kevin P. Enright, Monroe County Surveyor, hereby certify that this document was prepared under my direction in accordance with the provisions of section 36-2-12-11 of the Indiana Code; and the above data is given under my hand and seal this 18th day of June, 2010.

Kevin P. Enright



Administered by the Monroe County Surveyor Review Board

Date: 7/12/2010